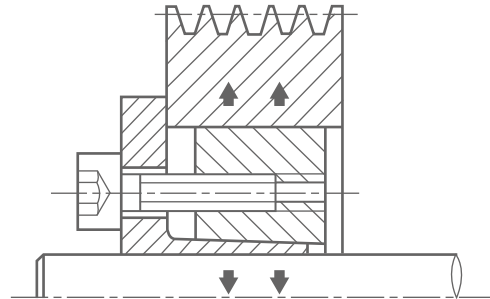


# CAPT-LOCKS



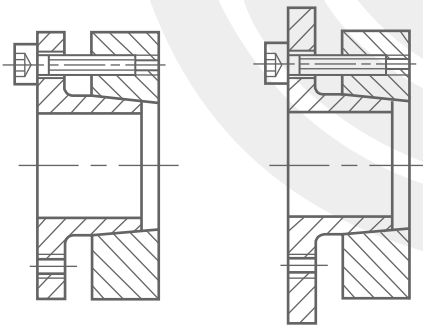
45suit for shaft diameter  
metric:f18~f400(mm)

FA CAPT-LOCKS are the extension series of FE type. The scope of bore diameter is from 18mm to 400mm and the biggest outside diameter D can reach 495mm. Their suitability to installation is very high. They are widely used in general mechanical joints.

Under the pressure of tightening bolts, the inner and outer rings moving along the taper surface oppositely caused radial pressure and frictional force, which join the hubs and shafts together.

FA CAPT -LOCKS are divided into two types:FA1 and FA2. The only difference is in the flange diameter of inner ring. As for FA1 type, the flange diameter of inner ring is 6mm bigger than outer ring. While as for FA2 type, the flange diameter of inner ring is the same as outside ring.

The installation of FA CAPT-LOCKS is very simple. They can be self-centered installed and their concentricity is very high. The processing is very simple. The requirement to hub's bore diameter and shaft diameter is not very strict, so that the time and cost for machining process can be saved.

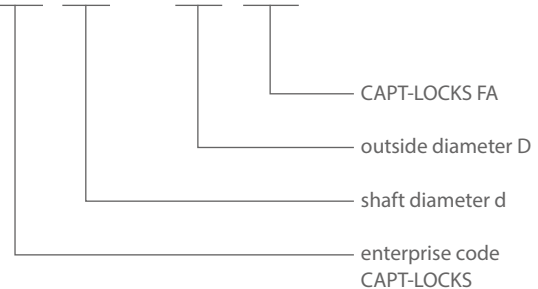


FA1

FA2

Nomenclature for CAPT-LOCKS type D

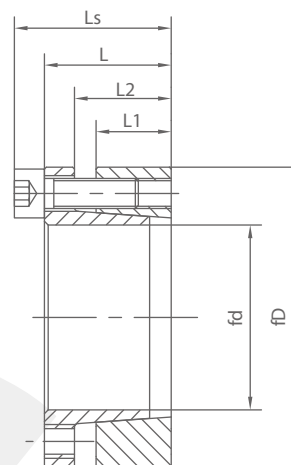
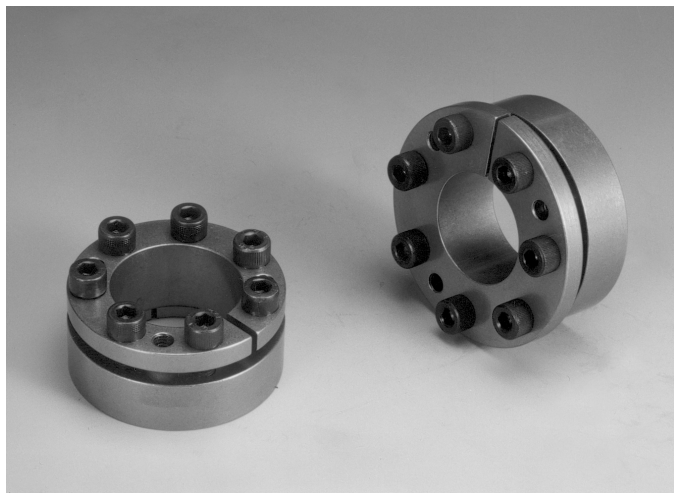
CL 50 X 80 FA



## FA CAPT-LOCKS

# CAPT-LOCKS

# FA1



## FA1 CAPT-LOCKS<sup>®</sup>

Table:1

Catalog dxD	Fundamental dimensions				SizesxN	Rated load		Ps Mpa	Ph Mpa	Ma N.m	G Kg
	L1	L2	L	Ls		Ft(Kn)	Mt(Kn.m)				
CL18x47FA1	17	22	28	34	M6x5	34	0.31	314	125	14	0.26
CL19x47FA1	17	22	28	34	M6x5	35	0.33	297	125	14	0.27
CL20x47FA1	17	22	28	34	M6x5	38	0.38	295	125	14	0.27
CL22x47FA1	17	22	28	34	M6x5	38	0.41	270	125	14	0.28
CL24x50FA1	17	22	28	34	M6x5	38	0.45	245	120	14	0.29
CL25x50FA1	17	22	28	34	M6x6	45.6	0.57	285	140	14	0.29
CL28x55FA1	17	22	28	34	M6x6	45.6	0.63	255	130	14	0.35
CL30x55FA1	17	22	28	34	M6x6	45.6	0.66	235	130	14	0.36
CL32x60FA1	17	22	28	34	M6x8	60.6	0.97	295	155	14	0.44
CL35x60FA1	17	22	28	34	M6x8	60.6	1.06	270	155	14	0.47
CL38x65FA1	17	22	28	34	M6x8	60.6	1.15	250	145	14	0.48
CL40x65FA1	17	22	28	34	M6x8	60.6	1.21	235	145	14	0.55
CL42x75FA1	20	25	33	41	M8x7	98	2.05	295	170	35	0.76
CL45x75FA1	20	25	33	41	M8x7	98	2.2	290	170	35	0.78
CL48x80FA1	20	25	33	41	M8x7	98	2.35	270	160	35	0.81
CL50x80FA1	20	25	33	41	M8x7	98	2.45	260	160	35	0.87
CL55x85FA1	20	25	33	41	M8x8	112	3.08	270	175	35	0.94
CL60x90FA1	20	25	33	41	M8x8	112	3.36	245	165	35	1.00
CL63x95FA1	20	25	33	41	M8x9	126	3.87	260	175	35	1.06
CL65x95FA1	20	25	33	41	M8x9	126	4.09	250	175	35	1.70
CL70x110FA1	24	30	40	50	M10x8	179	6.3	280	180	70	1.79
CL75x115FA1	24	30	40	50	M10x8	179	6.7	260	170	70	1.89
CL80x120FA1	24	30	40	50	M10x8	179	7.15	250	170	70	1.98
CL85x125FA1	24	30	40	50	M10x9	200	8.5	260	180	70	2.15
CL90x130FA1	24	30	40	50	M10x9	200	9.1	250	170	70	2.24
CL95x135FA1	24	30	40	50	M10x10	224	10.6	260	180	70	3.07
CL100x145FA1	26	32	44	56	M12x8	268	13.4	270	190	125	3.35
CL110x155FA1	26	32	44	56	M12x8	268	14.6	240	180	125	3.59
CL120x165FA1	26	32	44	56	M12x9	298	17.9	250	180	125	5.04
CL130x180FA1	34	40	54	68	M12x12	400	26	240	170	125	5.33

Note: All the items listed above are for the standard parts in stock

# CAPT-LOCKS

# FA1

## FA1 CAPT-LOCKS <sup>®</sup>

Table:1

Catalog dxD	Fundamental dimensions				SizesxN	Rated load		Ps	Ph	Ma	G
	L1	L2	L	Ls		Ft(Kn)	Mt(Kn.m)	Mpa	Mpa	N.m	Kg
CL140x190FA1	34	40	54	68	M14x9	384	27	210	150	190	5.81
CL150x200FA1	34	40	54	68	M14x10	440	33	230	170	190	6.67
CL160x210FA1	34	40	54	68	M14x11	470	38	230	170	190	7.61
CL170x225FA1	44	50	64	78	M14x12	530	45	180	130	190	8.05
CL180x235FA1	44	50	64	78	M14x12	530	47	170	130	190	8.9
CL190x250FA1	44	50	64	78	M14x15	590	49	210	150	190	9.58
CL200x260FA1	44	50	64	78	M14x15	590	52	190	150	190	10.7
CL220x285FA1	50	56	72	88	M16x12	587	64.5	145	110	355	14.4
CL240x305FA1	50	56	72	88	M16x15	734	88	165	130	355	15.5
CL260x325FA1	50	56	72	88	M16x18	880	114	180	145	355	16.7
CL280x355FA1	60	66	84	102	M18x16	948	132	150	120	485	24.0
CL300x375FA1	60	66	84	102	M18x18	1059	159	160	125	485	25.5
CL320x405FA1	74	81	101	121	M20x18	1374	220	150	120	690	38.0
CL340x425FA1	74	81	101	121	M20x21	1603	272	175	135	690	40.0
CL360x455FA1	86	94	116	138	M22x18	1710	308	140	110	930	48.0
CL380x475FA1	86	94	116	138	M22x21	1995	379	155	125	930	57.0
CL400x495FA1	86	94	116	138	M22x21	1995	399	150	120	930	63.0

Note: All the items listed in the above table will be produced against orders

## FA1 CAPT-LOCKS Assembling diagram:

