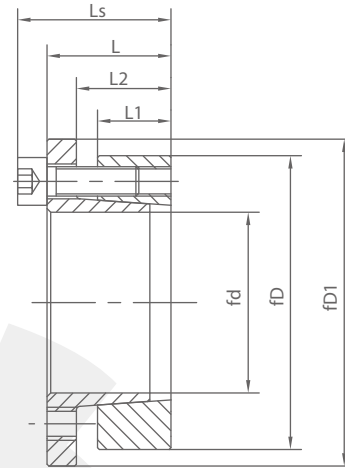


CAPT-LOCKS

FA2



FA2 CAPT-LOCKS[®]

Table:1

Catalog dxD	Fundamental dimensions					SizesxN	Rated load		Ps Mpa	Ph Mpa	Ma N.m	G Kg
	L1	L2	L	Ls	D1		Ft(Kn)	Mt(Kn.m)				
CL18x47FA2	17	22	28	34	56	M6x5	28	0.25	241	95	17	0.26
CL19x47FA2	17	22	28	34	56	M6x5	28	0.26	229	95	17	0.27
CL20x47FA2	17	22	28	34	56	M6x5	28	0.28	220	95	17	0.27
CL22x47FA2	17	22	28	34	56	M6x5	28	0.30	200	95	17	0.28
CL24x50FA2	17	22	28	34	59	M6x5	28	0.33	180	90	17	0.29
CL25x50FA2	17	22	28	34	59	M6x6	34	0.42	210	105	17	0.29
CL28x55FA2	17	22	28	34	64	M6x6	34	0.47	190	95	17	0.35
CL30x55FA2	17	22	28	34	64	M6x6	34	0.50	175	95	17	0.40
CL32x60FA2	17	22	28	34	69	M6x8	45	0.72	220	115	17	0.44
CL35x60FA2	17	22	28	34	69	M6x8	45	0.79	200	115	17	0.48
CL38x65FA2	17	22	28	34	74	M6x8	45	0.85	185	105	17	0.48
CL40x65FA2	17	22	28	34	74	M6x8	45	0.90	175	105	17	0.55
CL42x75FA2	20	25	33	41	84	M8x7	73	1.49	225	125	41	0.76
CL45x75FA2	20	25	33	41	84	M8x7	73	1.60	215	125	41	0.80
CL48x80FA2	20	25	33	41	89	M8x7	73	1.71	200	120	41	0.81
CL50x80FA2	20	25	33	41	89	M8x7	73	1.79	195	120	41	0.87
CL55x95FA2	20	25	33	41	94	M8x8	83	2.10	200	130	41	0.96
CL60x90FA2	20	25	33	41	99	M8x8	83	2.32	185	125	41	1.00
CL63x95FA2	20	25	33	41	104	M8x9	94	2.51	188	130	41	1.06
CL65x95FA2	20	25	33	41	104	M8x9	94	2.98	190	130	41	1.70
CL70x110FA2	24	30	40	50	119	M10x8	133	4.63	210	135	83	1.79
CL75x115FA2	24	30	40	50	124	M10x8	133	5.00	195	125	83	1.95
CL80x120FA2	24	30	40	50	129	M10x8	133	5.30	185	125	83	1.98
CL85x125FA2	24	30	40	50	134	M10x9	148	6.30	195	135	83	2.20
CL90x130FA2	24	30	40	50	139	M10x9	148	6.75	185	130	83	2.28
CL95x135FA2	24	30	40	50	144	M10x10	166	7.90	195	135	83	3.20
CL100x145FA2	26	32	44	56	154	M12x8	194	9.70	200	140	145	3.40
CL110x155FA2	26	32	44	56	164	M12x8	194	10.6	180	130	145	3.65
CL120x165FA2	26	32	44	56	174	M12x9	216	13.0	185	135	145	5.25
CL130x180FA2	34	40	54	68	189	M12x12	290	18.9	175	125	145	5.63

Note: All the items listed above are for the standard parts in stock

CAPT-LOCKS

FA2

FA2 CAPT-LOCKS[®]

Table:2

Catalog dxD	Fundamental dimensions					SizesxN	Rated load		Ps Mpa	Ph Mpa	Ma N.m	G Kg
	L1	L2	L	Ls	D1		Ft(Kn)	Mt(Kn.m)				
CL140x190FA2	34	40	54	68	199	M14x9	290	20.5	165	120	230	5.95
CL150x200FA2	34	40	54	68	209	M14x10	333	24.5	175	130	230	6.89
CL160x210FA2	34	40	54	68	219	M14x11	362	28.9	180	135	230	7.85
CL170x225FA2	44	50	64	78	234	M14x12	400	33.2	140	105	230	8.32
CL180x235FA2	44	50	64	78	244	M14x12	400	35.6	135	105	230	9.12
CL190x250FA2	44	50	64	78	259	M14x15	500	46.5	160	120	230	9.58
CL200x260FA2	44	50	64	78	269	M14x15	500	48.3	150	115	230	11.7
CL220x285FA2	50	56	72	88	294	M16x12	578	58.0	145	110	355	15.9
CL240x305FA2	50	56	72	88	314	M16x15	725	79.0	165	130	355	16.5
CL260x325FA2	50	56	72	88	334	M16x18	830	102	180	145	355	17.7
CL280x355FA2	60	66	84	102	364	M18x16	925	118	150	120	485	24.0
CL300x375FA2	60	66	84	102	384	M18x18	1050	142	160	125	485	25.5
CL320x405FA2	74	81	101	121	414	M20x18	1365	198	150	120	690	38.0
CL340x425FA2	74	81	101	121	434	M20x21	1590	230	175	135	690	40.0
CL360x455FA2	86	94	116	138	464	M22x18	1675	256	140	110	930	48.0
CL380x475FA2	86	94	116	138	484	M22x21	1980	310	155	125	930	57.0
CL400x495FA2	86	94	116	138	504	M22x21	1980	352	150	120	930	63.0

Note: All the items listed in the above table will be produced against orders

