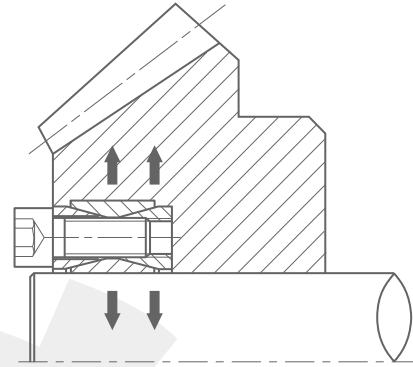


# CAPT-LOCKS



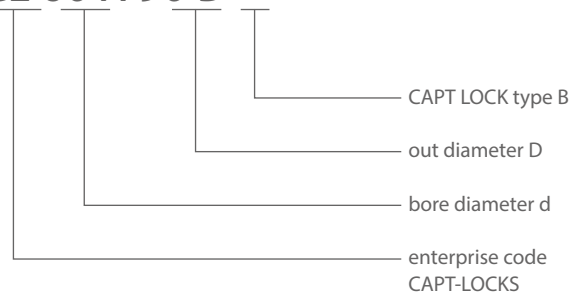
Suit for shaft f19~f300 (mm)



B CAPT-LOCKS, standard commonly used type. The machining precision of the connected parts can be reduced if this type CAPT-LOCKS is used, then reduce the machining cost. Using B type CAPT-LOCKS, easy-on, easy-off, excellent installation and can be self-centered. The connection function depend on its impacted power and frictional power among the CAPT-LOCKS, the bore of hub and the shaft to achieve non-clearance joint and no key will be used, so that some overlaborate work such as key machining, pressing installation and hot installation etc. can be saved, the working efficiency and the lifetime of the machining parts can be raised.

Nomenclature for CAPT-LOCK type B

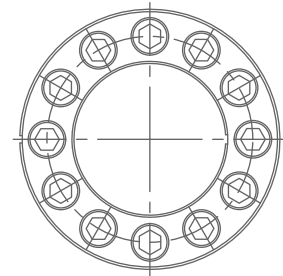
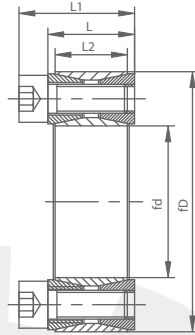
**CL 60 X 90 B**



**B** CAPT-LOCKS

# CAPT-LOCKS

## B



## B CAPT-LOCKS<sup>®</sup>

Table:1

Catalog dxD	Fundamental dimensions			SizesxN	Rated load		Ps Mpa	Ph Mpa	Ma N.m	G Kg
	L2	L	L1		Ft(Kn)	Mt(Kn.m)				
CL19x47B	17	20	26	M6x8	27	0.24	213	90	14	0.25
CL20x47B	17	20	26	M6x8	27	0.27	210	90	14	0.24
CL22x47B	17	20	26	M6x8	27	0.30	195	90	14	0.23
CL25x50B	17	20	26	M6x9	30	0.38	190	95	14	0.25
CL28x55B	17	20	26	M6x10	33	0.47	185	95	14	0.30
CL30x55B	17	20	26	M6x10	33	0.50	175	95	14	0.29
CL35x60B	17	20	26	M6x12	40	0.70	180	105	14	0.32
CL38x63B	17	20	26	M6x14	46	0.88	185	105	14	0.33
CL40x65B	17	20	26	M6x14	46	0.92	180	110	14	0.34
CL42x72B	20	24	32	M8x12	65	1.36	200	117	35	0.48
CL45x75B	20	24	32	M8x12	72	1.62	210	125	35	0.57
CL50x80B	20	24	32	M8x12	71	1.77	190	115	35	0.60
CL55x85B	20	24	32	M8x14	83	2.27	200	130	35	0.63
CL60x90B	20	24	32	M8x14	83	2.47	180	120	35	0.69
CL65x95B	20	24	32	M8x16	93	3.04	190	130	35	0.73
CL70x110B	24	28	38	M10x14	132	4.60	210	130	70	1.26
CL75x115B	24	28	38	M10x14	131	4.90	195	125	70	1.33
CL80x120B	24	28	38	M10x14	131	5.20	180	120	70	1.40
CL85x125B	24	28	38	M10x16	148	6.30	195	130	70	1.49
CL90x130B	24	28	38	M10x16	147	6.60	180	125	70	1.53
CL95x135B	24	28	38	M10x18	167	7.90	195	135	70	1.62
CL100x145B	29	33	45	M12x14	192	9.60	195	135	125	2.01
CL105x150B	29	33	45	M12x14	190	9.98	185	130	125	2.10
CL110x155B	29	33	45	M12x14	191	10.50	180	125	125	2.15
CL120x165B	29	33	45	M12x14	218	13.10	185	135	125	2.35
CL125x170B	29	33	45	M12x18	220	13.78	180	130	125	2.95
CL130x180B	34	38	50	M12x20	272	17.60	165	120	125	3.51
CL140x190B	34	38	50	M12x22	298	20.90	165	125	125	3.85
CL150x200B	34	38	50	M12x24	324	24.20	170	125	125	4.07
CL160x210B	34	38	50	M12x26	350	28.00	170	130	125	4.30
CL170x225B	38	44	58	M14x22	386	32.80	160	120	190	5.78
CL180x235B	38	44	58	M14x24	420	37.80	165	125	190	6.05
CL190x250B	46	52	66	M14x28	490	46.50	150	115	190	8.25
CL200x260B	46	52	66	M14x30	525	52.50	150	115	190	8.65
CL210x275B	50	56	72	M16x24	599	62.89	151	115	295	10.10

# CAPT-LOCKS

# B

## B CAPT-LOCKS®

Table:2

Catalog dxD	Fundamental dimensions			SizesxN	Rated load		Ps Mpa	Ph Mpa	Ma N.m	G Kg
	L2	L	L1		Ft(Kn)	Mt(Kn.m)				
CL220x285B	50	56	72	M16x26	620	68.00	150	115	295	11.22
CL240x305B	50	56	72	M16x30	715	85.50	160	125	295	12.20
CL250x315B	50	56	72	M16x32	768	96.00	162	125	295	12.70
CL260x325B	50	56	72	M16x34	800	104.00	165	130	295	13.20
CL280x355B	60	66	84	M18x32	915	128.00	145	115	405	19.20
CL300x375B	60	66	84	M18x36	1020	153.00	150	120	405	20.50
CL320x405B	72	78	98	M20x36	1310	210.00	150	120	580	29.60
CL340x425B	72	78	98	M20x36	1310	224.00	145	115	580	31.10
CL360x455B	84	90	112	M22x36	1630	294.00	145	115	780	42.20
CL380x475B	84	90	112	M22x36	1620	308.00	135	110	780	44.00
CL400x495B	84	90	112	M22x36	1610	322.00	130	105	780	46.00
CL420x515B	84	90	112	M22x40	1780	374.00	135	110	780	50.00
CL450x555B	96	102	126	M24x40	2050	461.25	124	100	1000	65.00
CL480x585B	96	102	126	M24x42	2160	518.40	124	100	1000	71.00
CL500x605B	96	102	126	M24x44	2240	560.00	123	100	1000	72.60
CL530x640B	96	102	126	M24x45	2330	617.00	121	110	1000	83.60
CL560x670B	96	102	126	M24x48	2440	680.00	120	110	1000	85.00
CL600x710B	96	102	126	M24x50	2580	775.00	118	100	1000	91.00
CL630x740B	96	102	126	M24x52	2680	844.00	117	105	1000	94.00
CL670x780B	96	102	126	M24x56	2820	944.00	116	100	1000	101.0
CL710x820B	96	102	126	M24x60	2970	1054.0	115	100	1000	106.0
CL750x860B	96	102	126	M24x62	3130	1173.0	115	100	1000	112.0
CL800x910B	96	102	126	M24x66	3260	1300.0	112	100	1000	118.0
CL850x960B	96	102	126	M24x70	3500	1487.0	113	100	1000	125.0
CL900x1010B	96	102	126	M24x75	3680	1650.0	112	100	1000	132.0
CL950x1060B	96	102	126	M24x80	3870	1838.0	112	100	1000	139.0
CL1000x1110B	96	102	126	M24x82	4000	2000.0	110	100	1000	146.0

The items in table 1 are standard products in stock . The items in table 2 will be produced against orders.

